

# MONTHLY MEMBERSHIP PROGRESS REPORT

LOCATION NORTH DAKOTA

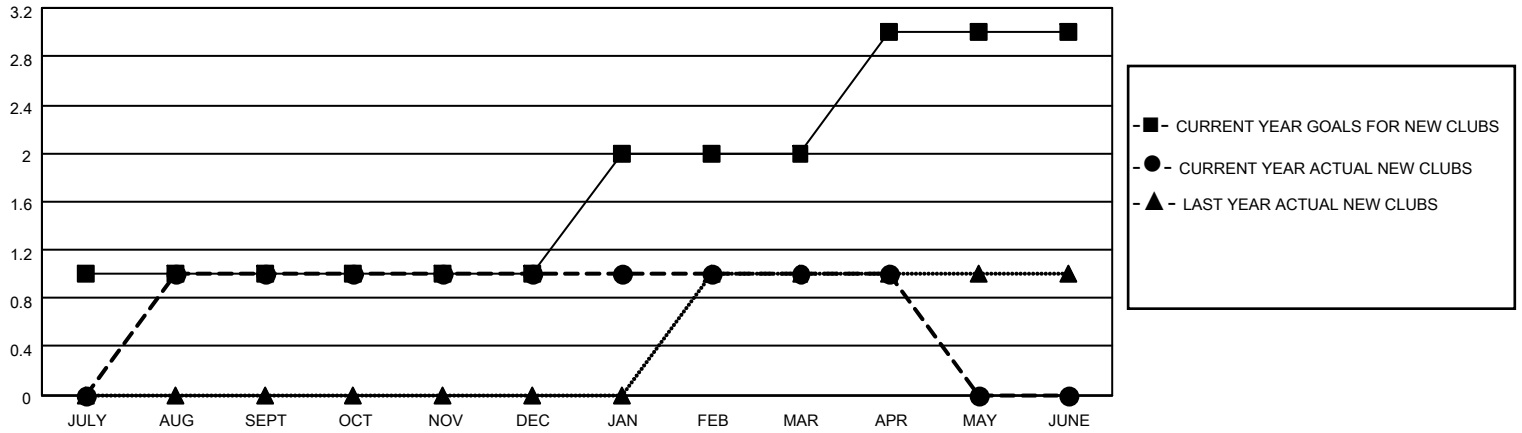
District 5 NE

Results as of: 4/30/2021

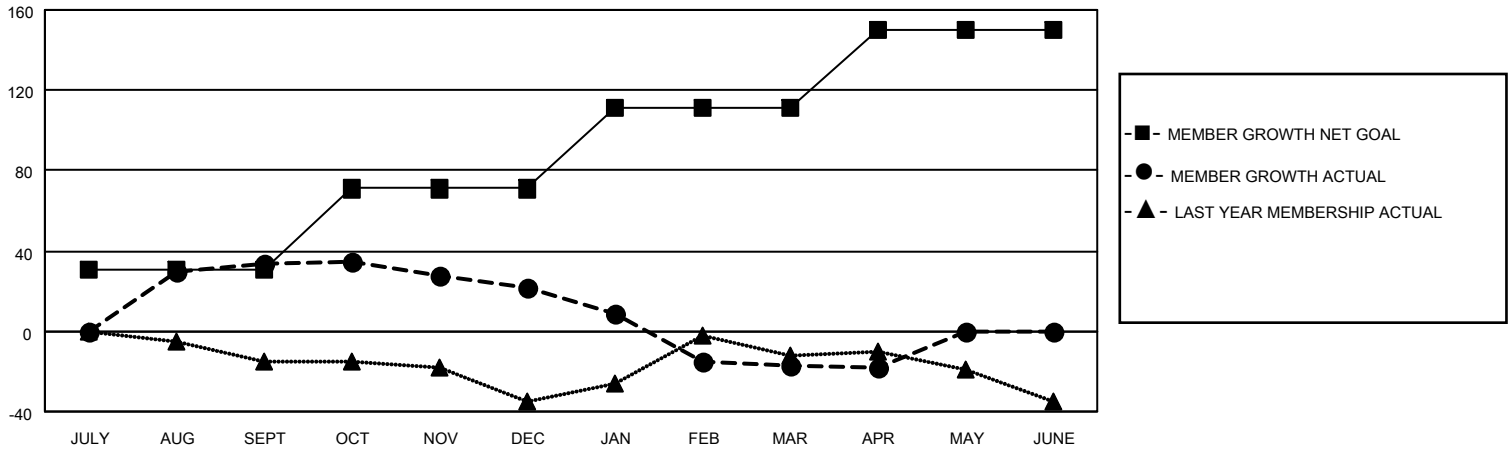
Clubs			
RESULTS FOR 2020-2021			
QUARTER	NEW CLUB GOAL	NEW CLUBS	DROPPED CLUBS
JULY/AUG/SEPT	1	1	0
OCT/NOV/DEC	0	0	0
JAN/FEB/MAR	1	0	1
APR/MAY/JUNE	1	0	0

Members			
RESULTS FOR 2020-2021			
QUARTER	MEMBER GROWTH NET GOAL	MEMBER GROWTH ACTUAL	DROPPED MEMBERS ACTUAL (including transfers)
JULY/AUG/SEPT	31	63	23
OCT/NOV/DEC	40	12	23
JAN/FEB/MAR	40	12	50
APR/MAY/JUNE	39	8	7

**GOALS AND ACTUAL NEW CLUBS CUMULATIVE**



**GOALS AND ACTUAL MEMBERS CUMULATIVE**



DROPPED CLUBS: 1	23 CLUBS OF 53 ADDED 1 OR MORE NEW MEMBERS	<u>GENDER DISTRIBUTION</u> MALE 869 (73.71%) FEMALE 310 (26.29%)
<u>DROPPED MEMBERS</u> DECEASED 15 CLUB CANCELLED 20 OTHER 68 <hr/> TOTAL 103	<a href="#">CLICK HERE FOR CUMULATIVE MEMBERSHIP DATA</a>	TOTAL FAMILY UNIT MEMBERS 127 FAMILY MEMBERS PAYING HALF DUES 65